



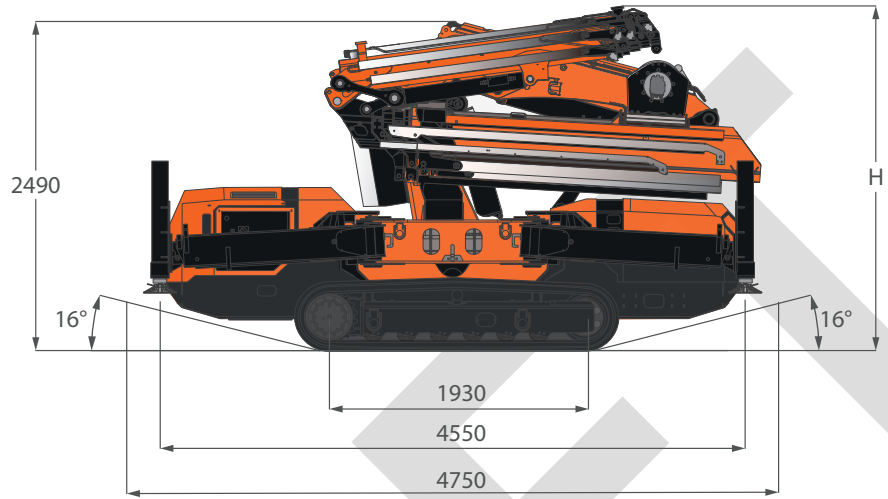
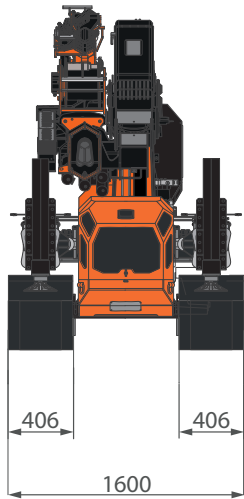
Technical Data

Specification & Capacities

JF235 Draft

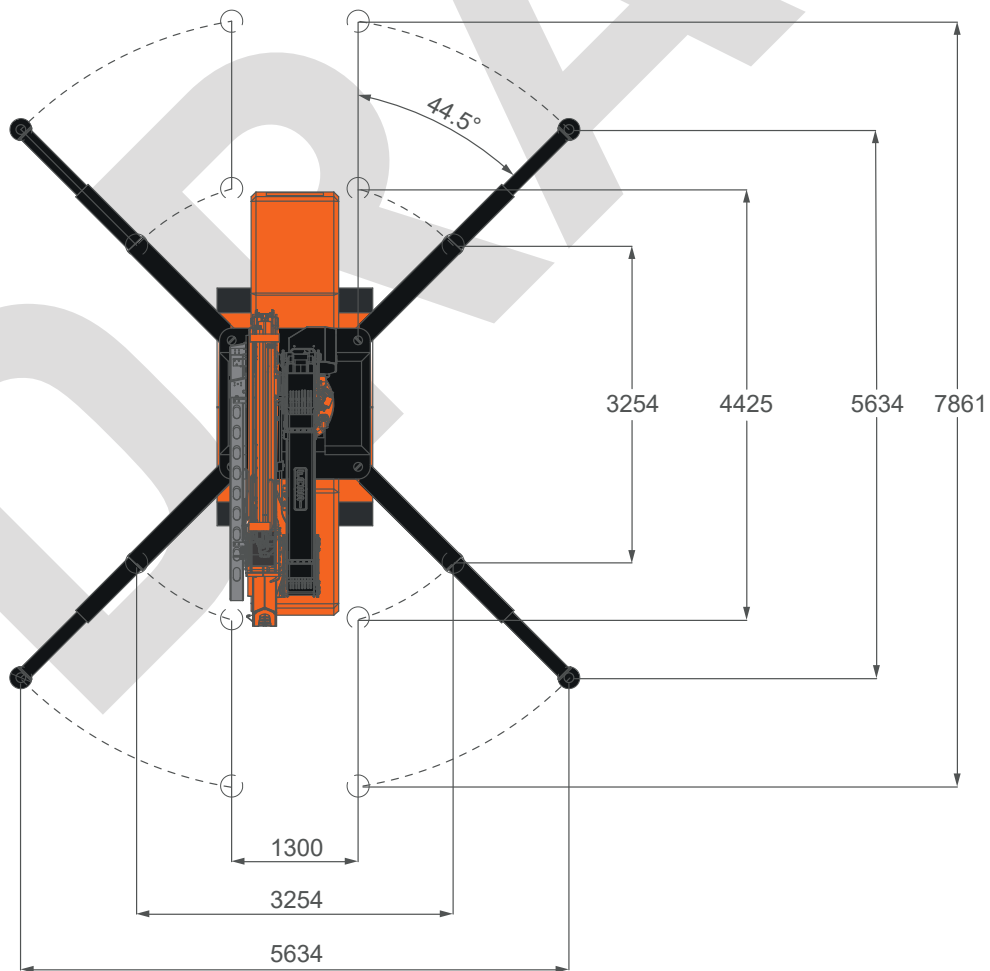
OVERALL DIMENSIONS

(with jib and low marking pads)











H	WITH ACTIVATION	2800
	W/O ACTIVATION	2630


STABILIZATION AREA




[mm]

OVERALL INFORMATIONS



CRANE INFO		NAME	DESCRIPTION	U.M	VALUE
CRANE INFO		OVERALL DIMENSIONS	Height	mm	2.800
			Length		4.750
			Width		1.600
		BOOM	Length	m	12,7
			Speed	s	-
		SLEWING	Angle	°	360°
			Speed	rpm	1
		LIFTING	Working Angle	°	-
			Speed	s	Primary: - Secondary: -
			Max Capacity	kg	6.150
			Max Outrigger Bearing Load	kg	-
			Track load	kg/cm ²	4,4
			Travel Speed	km/h	-
			Gradeability	°	-
		Working Temperature	°C	-20°/+40°	
		Lifting Class	-	-	


WEIGHT		CRANE	JF235	kg	10.230*
--------	---	-------	-------	----	---------

WEIGHTS		HOOK BLOCK	Single Fall	kg	20
			Double Fall	kg	49
			Triple Fall	kg	57
			Jib Single Fall	kg	74

*: Dry weight

ACCESSORIES		JIB	JIBL214	kg	50
		LOW MARKING PADS	WTP-JFM	kg	216
		OUTRIGGERS MATS	OM500	kg	30
		POWERPACK	3-Phase Power pack	kg	80

ENGINE		DIESEL ENGINE	Power	kW	33
			Horse Power	HP	43,3
			Tank capacity	L	52
		ELECTRIC	Voltage	V	400
			Power	kW	13,5

HYDRAULIC SYSTEM		OIL	Working Pressure		bar	32	
			Tank Capacity		L	120	
			Type		Mineral	ISO 6743-4:HV	
			Viscosity Grade		VG	46	
			MAIN PUMP	Type		Variable flow Pump LS	
				Displacement		cm ³ /rev	28
				Max Oil Flow		L/min	80
				Type		Variable flow Pump LS	
				Displacement		cm ³ /rev	45
				Max Oil Flow		L/min	60

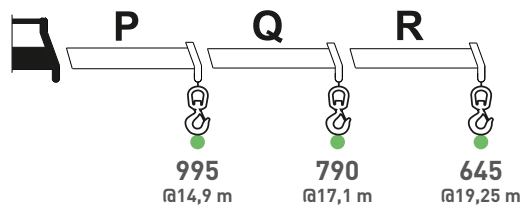
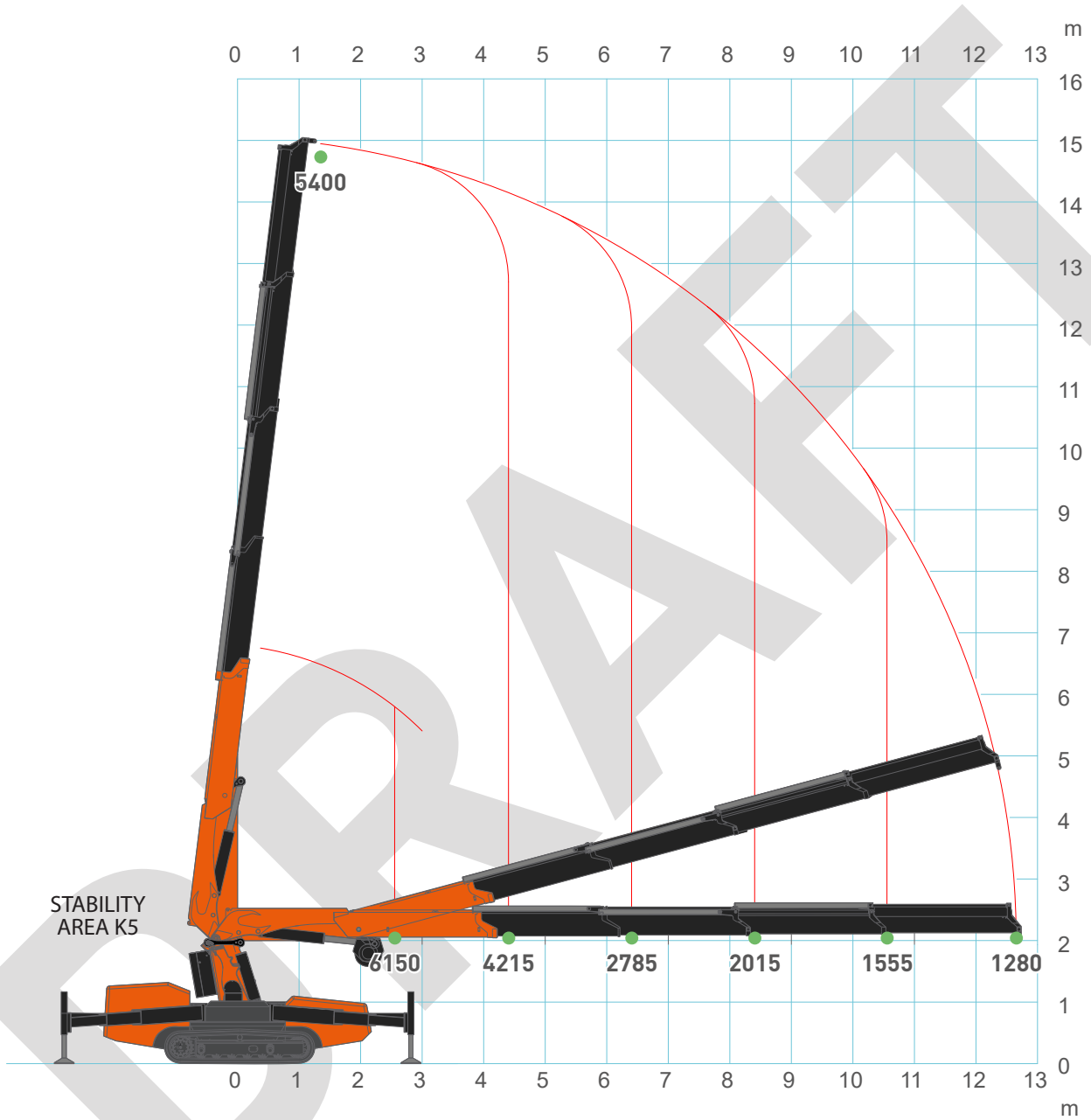
WINCH PERFORMANCE

WINCH	Layer		Max pull line	Standard rope speed
			kg	m/min
	1		2.000	32
	2		1.840	37
	3		1.710	40
4		1.600	43	
ROPE	Wire rope	Max load	Ø	Total length
		kg	mm	m
	19x7 right lang lay Non rotating	2.400	7	60

HOOK BLOCK	Block type	Load	N° of	
			Sheaves	Lines
		kg		
	Triple fall block	6.000	1	3
	Double fall block	3.500	1	2
	Single fall block	2.000	-	1

JF235 - MAIN BOOM

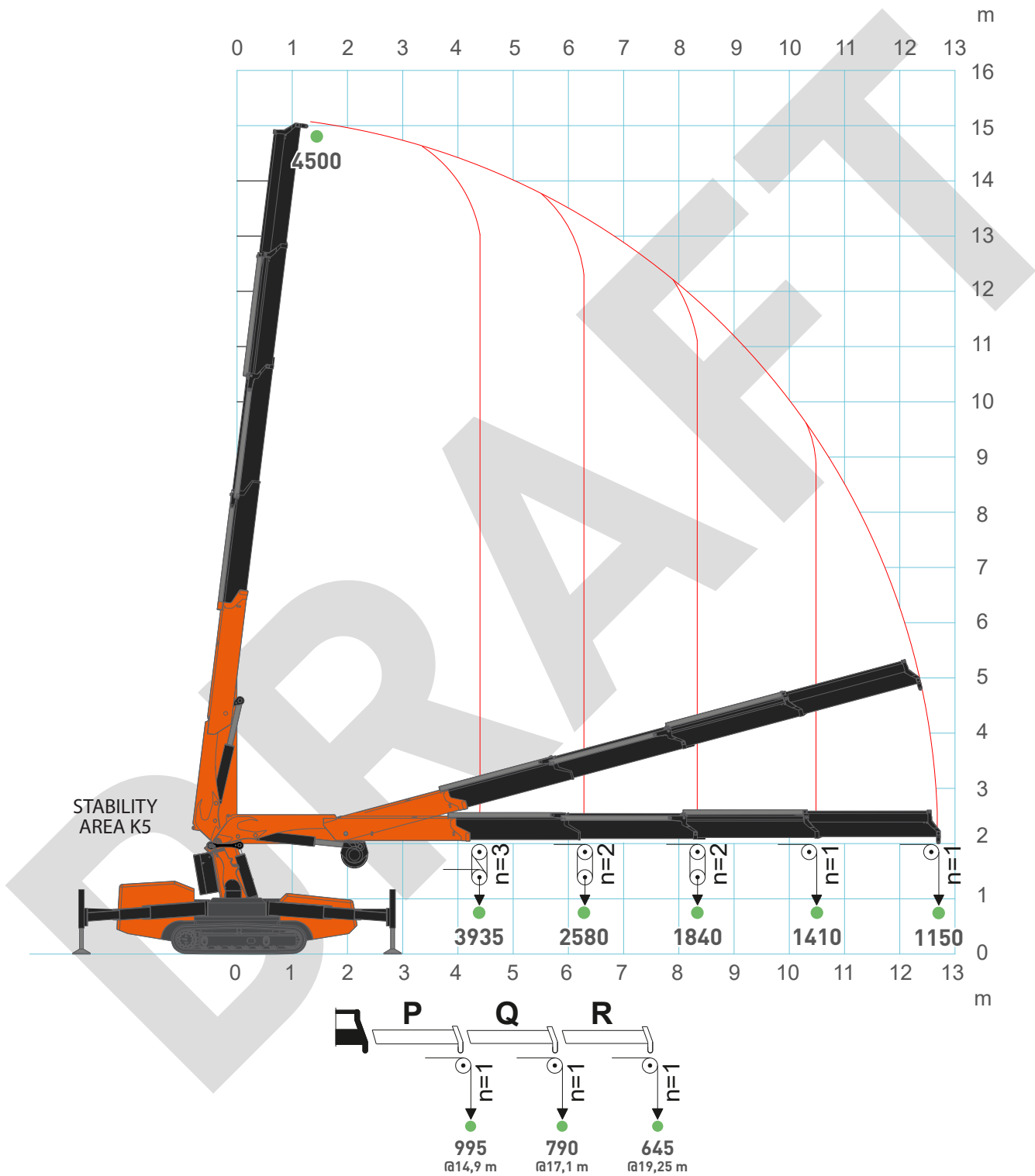
Hook configuration



[kg]

JF235 - MAIN BOOM

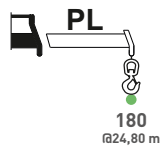
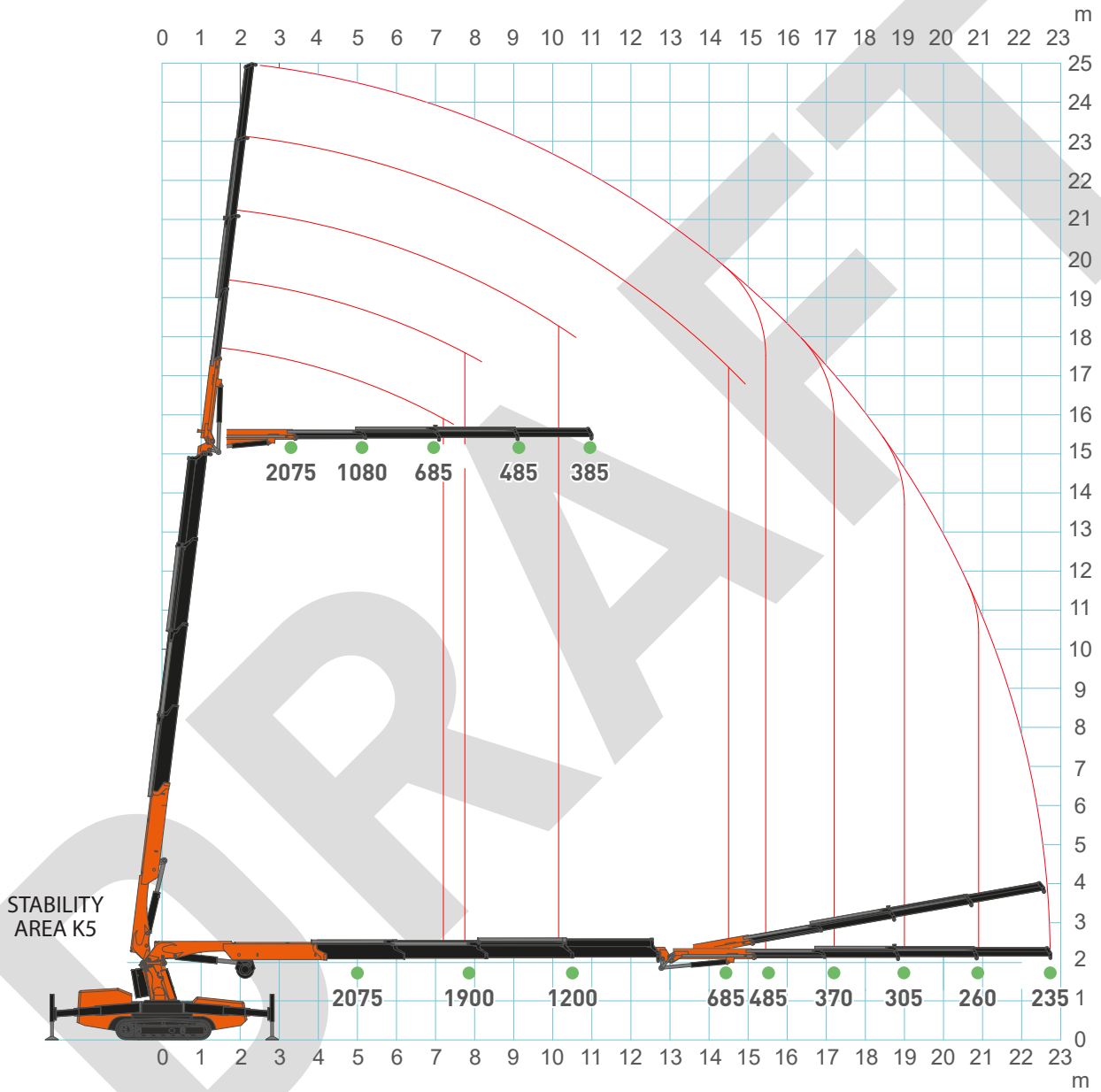
Winch configuration



[kg]

JF235 - JIB

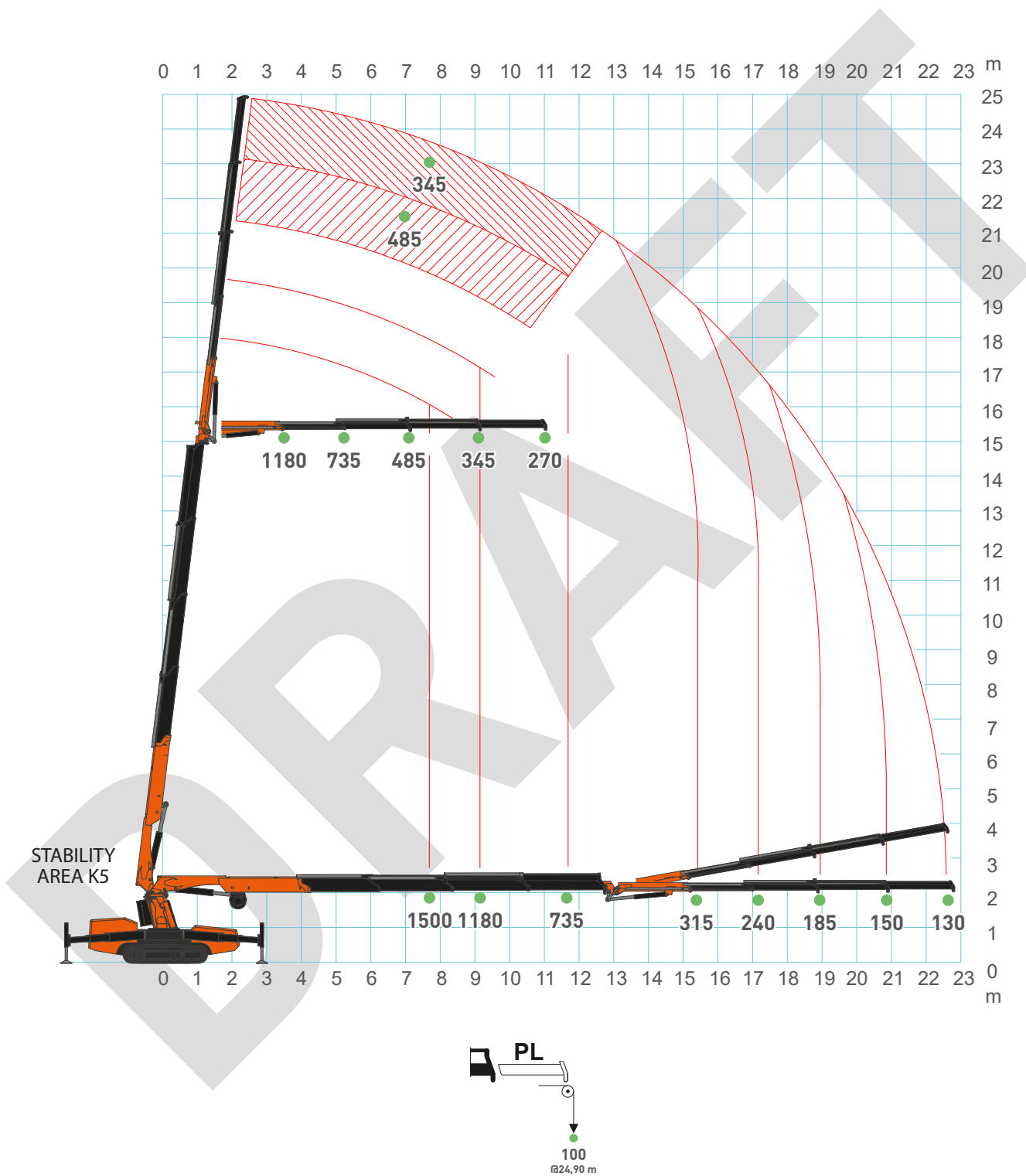
Hook configuration



[kg]

JF235 - JIB

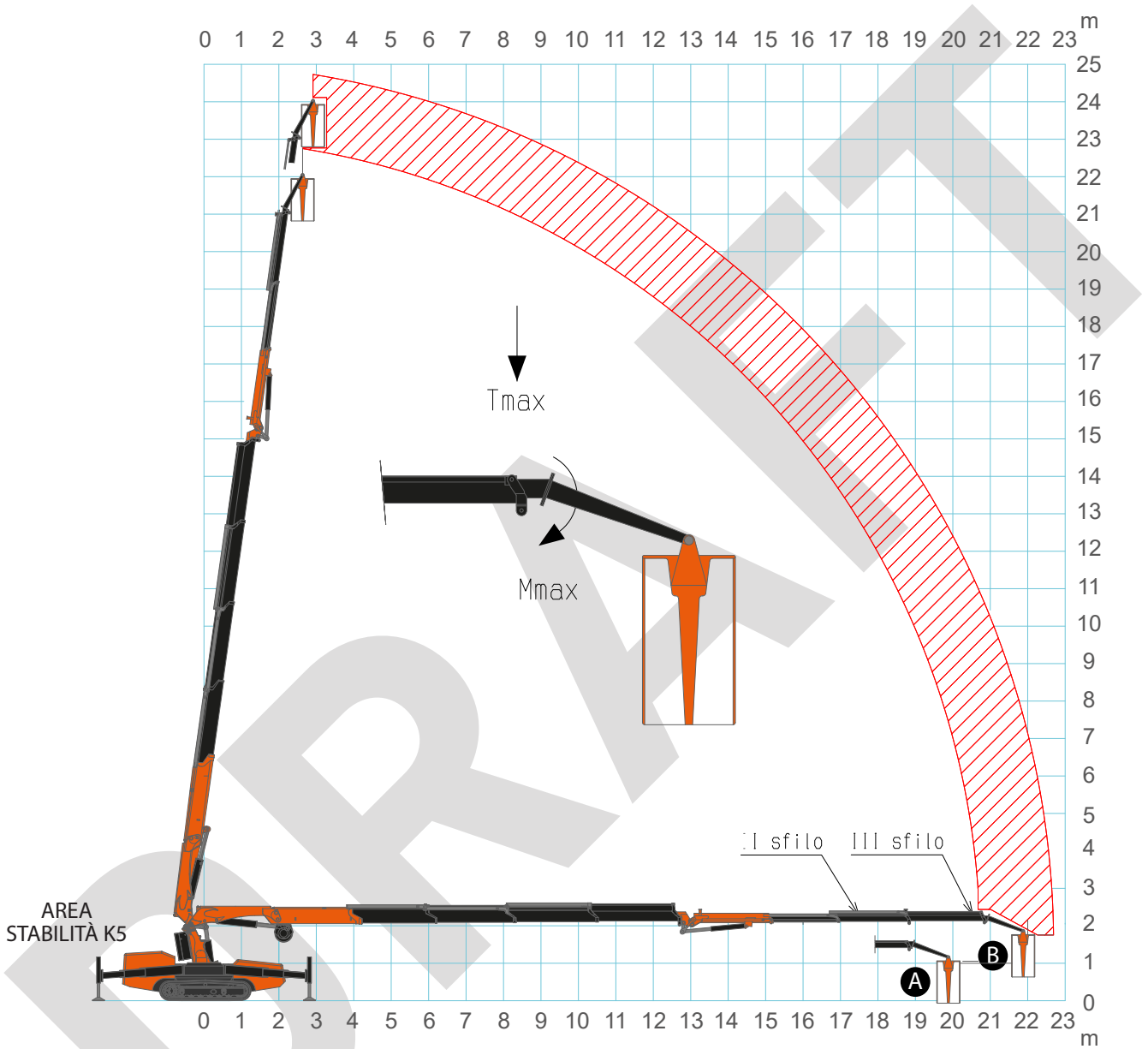
Winch configuration



[kg]

JF235

Man Working Platform



A MWP-2PG.JIB2500.4HA
 $P_{MAX} = 200 \text{ KG}$



B MWP-1PG.JIB2500.4HA
 $P_{MAX} = 120 \text{ KG}$

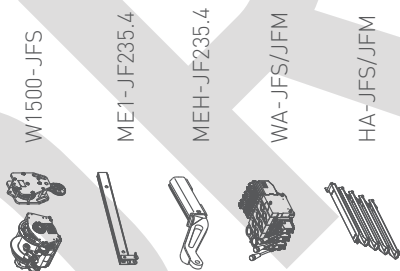


ACCESSORIES

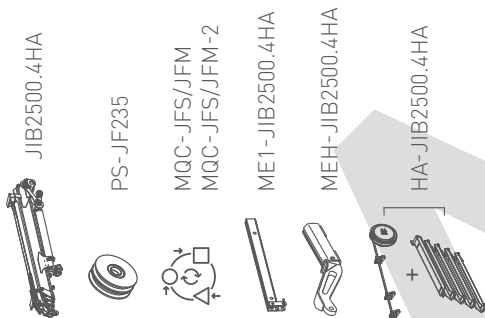
JF235

JF235

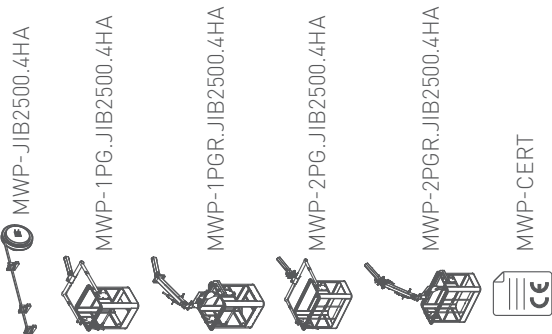
CRANE OPTIONS



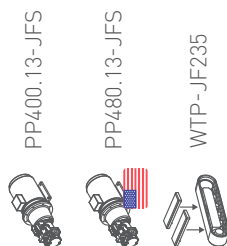
JIB & ATTCHMENTS



MAN-BASKET



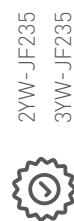
CRAWLER OPTIONS








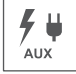




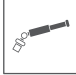





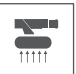


COLOR & STICKERS PERSONALIZATION



WARRANTY EXTENSION



SYMBOLS

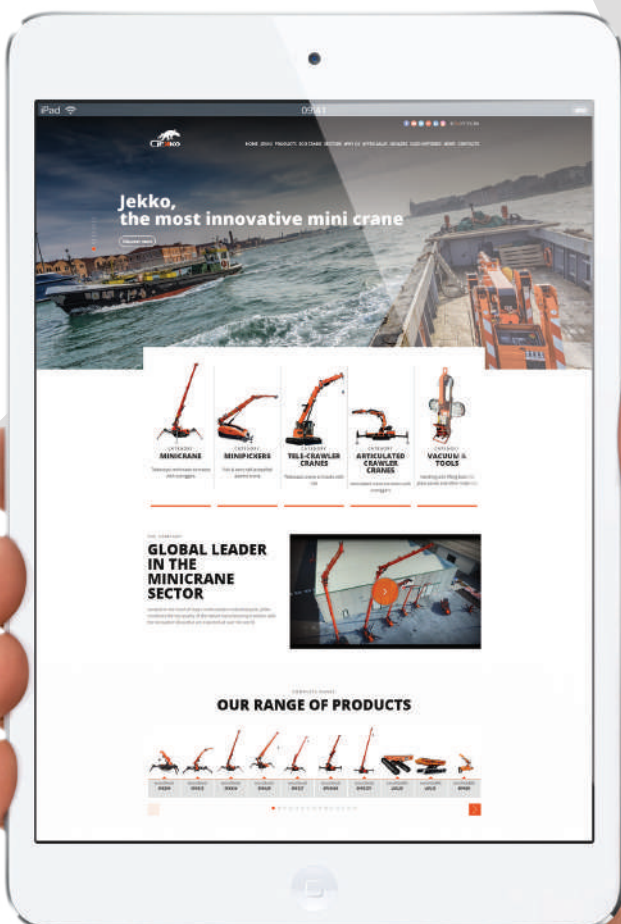
	Weight		Diesel Engine		Boom Angle		Outriggers mats
	Crane		Power Pack		Boom Length		Hydraulic oil
	Gradeability		Slewing		Jib		Outrigger Load
	Travel Speed		Electric Engine		Hookblock		Working Temperature
	Track Load		Maximum Capacity		Low marking pads		

REMARKS REFERRING TO LOAD CHART

- HC1 HD5 S2 lifting class according to EN12999:2011 standards.
- Lifting capacities are given in kilograms.
- The weight of the hook blocks and hooks is part of the load and therefore it must be deducted from the lifting capacities.
- Working radii are measured from the slewing centre.
- The lifting capacities given for the telescopic boom apply if the folding jib is removed.
- Subject to modification of lifting capacities.

YOUR JEKKO DEALER

EN All specifications and features herein described can be changed without prior advice. All indicated data are indicative only and are not binding as crane performs differently depending on its use. **IT** Tutte le caratteristiche e le specifiche descritte possono essere soggette a variazioni senza preavviso. Tutti i dati riportati sono forniti a puro titolo informativo e non sono impegnativi dal momento che le prestazioni della macchina variano in funzione dell'utilizzo. **DE** Unangekündigte Änderungen sämtlicher Eigenschaften und Daten sind möglich. Alle Angaben sind Richtwerte und nicht verbindlich da die Leistungen der Vorrichtung von deren Einsatz abhängen. **ES** Todas las características y las especificaciones aquí indicadas pueden ser sujetas a variaciones sin aviso. Se dan todos los datos aquí indicados como simples informaciones. No se consideran como vinculantes, dado que las prestaciones del maquinario pueden variar. **FR** Toutes les caractéristiques et le spécifications descriptives peut être sujet à variation sans préavis. Tout les données rapportés sont fournis à titre informatif et ne sont pas engager au moment que la prestation de la machine change en fonction de l'emploi.



www.jekko-cranes.com

Visit jekko-cranes.com to keep in contact with us, discover all the latest news and find out technical details of all our products.



Jekko s.r.l.

Via Campardone, 1 - 31014 Colle Umberto (TV) - Italy
info@jekko.it - www.jekko-cranes.com

SERIAL NUMBER:



13.01.2023 | DFT0.2