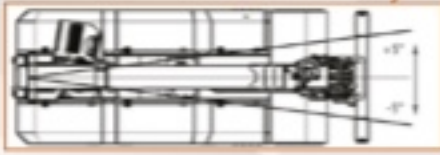


MPK50 Main Features

BOOM ROTATION

✓ Innovative boom rotation system +5° / -5°

PATENTED



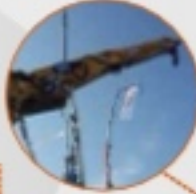
PROFESSIONAL RADIO REMOTE CONTROL

- ✓ Proportional
- ✓ Multifunctions (up to 3 movements)
- ✓ LCD display
- ✓ Crane and wheel control



FRONT STABILIZER

✓ To increase stability and lifting capacity



DIFFERENT ATTACHMENTS

TWO SECTIONS MODULAR JIB



TILTING HEAD



GLASS MANIPULATOR



Product Catalog



Jekko srl
Via Campardone, 1 - 31014 Colle Umberto (TV) Italy
info@jekko.it - www.jekko-cranes.com

MPK50

5 T | 3050 x 1200 x 1750 mm | 9.2 m | 6.1 m

Pure innovation. Totally radio remote-controlled, battery powered, 5 T pick & carry, patented boom rotation system and frontal stabilizer bar make this crane one of a kind.



Technical Information

Dimensions	3050 x 1200 x 1750 mm
Weight	3050 Kg
Capacity	5000 Kg
Max. height	10 m
Max. reach	Module 1800 / 22 Kg Module 700 / 22 Kg Tot. 58 Kg
Max. speed	180
Power	2 Batteries, 24 V, 400 Ah 12 kW, 16.7 Hp
Max. travel speed	4.0 km/h
Max. angle	30°



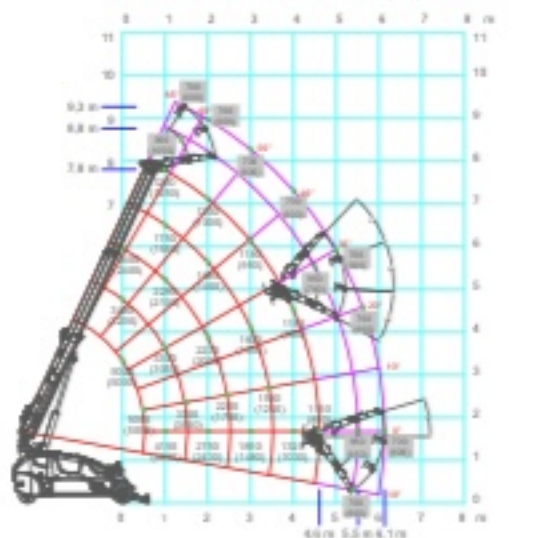
Winch & Fall Stages

Max. Winch: 1000 kg, 60 m - Ø 8 mm, 45.1 m/min.



Max. capacity	Line	Height
5000 kg	5	-11 m
4000 kg	4	-13 m
2000 kg	3	-18 m
2000 kg	2	-27 m
1000 kg	1	-52 m

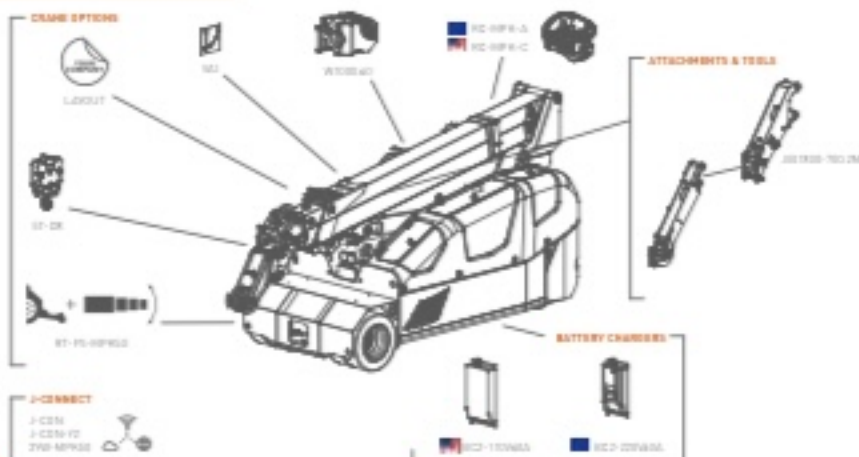
Load Chart



Dimensions



Crane Options



Tools Configurations

JIB 1800-700.2M	Short	Long	MV600.3E+
Winch	1800 kg	700 kg	600 kg
Winch & Fall	1000 kg @ 8.5m	700 kg @ 9 m	400 kg @ 8 m
Winch & Fall	150 kg @ 5.5m	700 kg @ 6 m	500 kg @ 4.5 m