

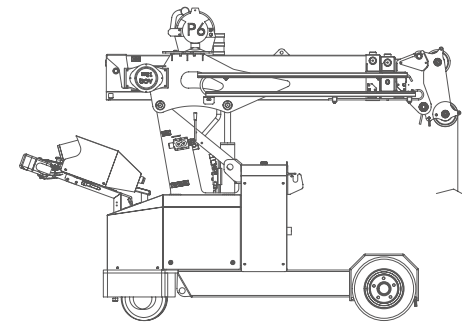
Technical Information

Dimension	LxWxH		2660 x 950 x 1950 mm
Crane & Options Weights		MPK20	1455
		/	500
		2T-D7	10
		JIB500G	30
		MR800.4	250
MPK20	Battery	1 Battery 24 V 345 Ah	3,0 kW 4,2 Hp
Speed			3.6 km/h
Gradability			10°



Winch&Fall Stages

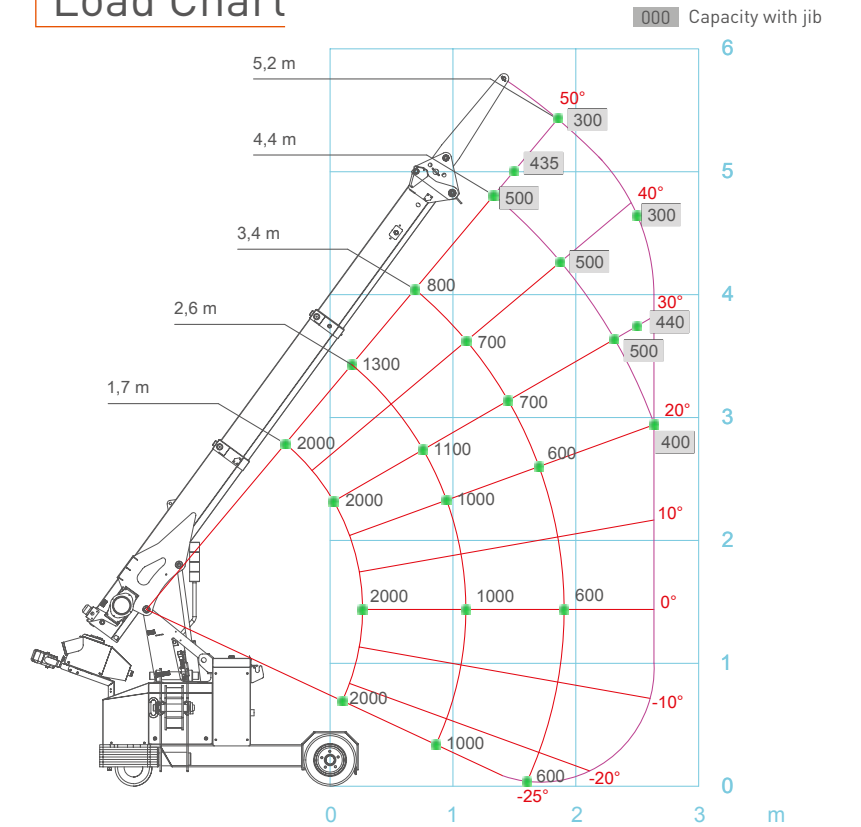
Main Winch	600 kg 60 m - Ø 7 mm 18 m/min.
------------	--------------------------------------



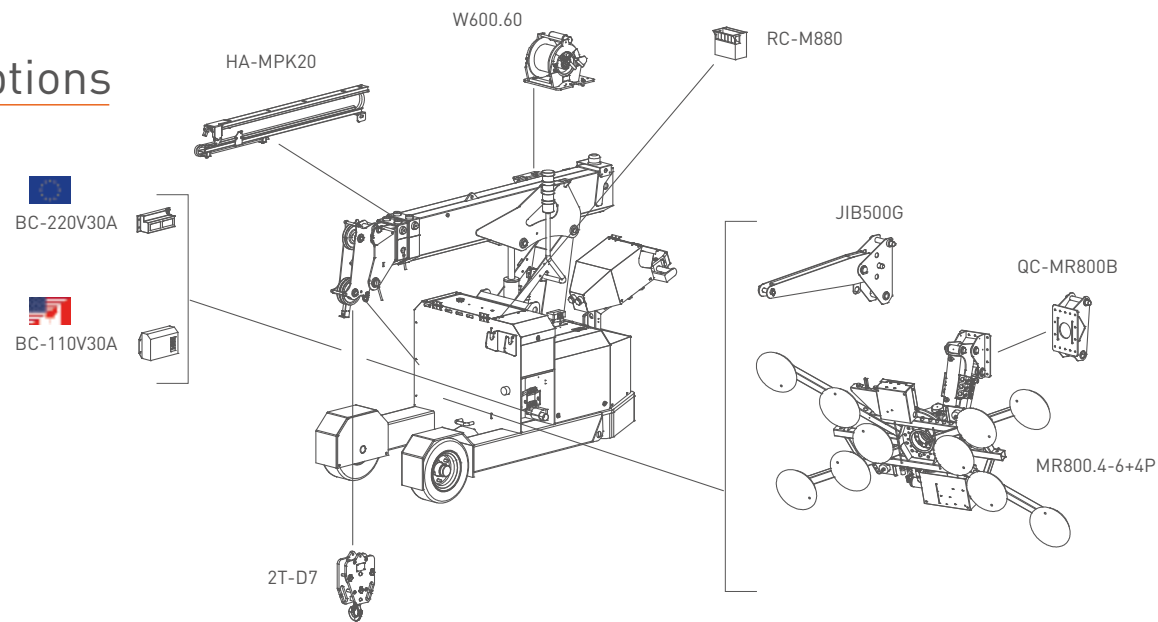
Max. Capacity	Line	Metres
1800 kg	3	-19 m
1200 kg	2	-28 m
600 kg	1	-55 m



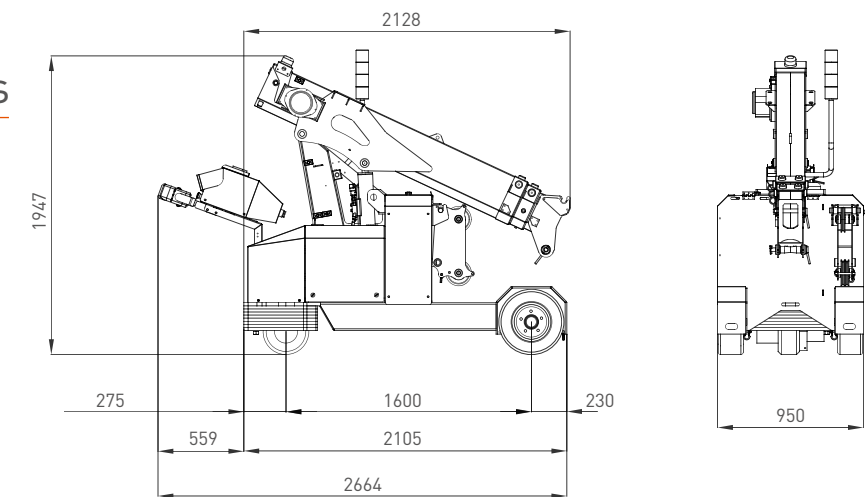
Load Chart



Crane Options



Dimensions



Tools Configurations

JIB500G		MR800	
	500 kg		800 kg
	300 kg @ 5.5 m		150 kg @ 4 m
	400 kg @ 2.5 m		150 kg @ 3.5 m