

# URW-376 (2.9t x 2.5m)

- Total width 1.3m
- Max working radius 14.45m
- Diesel powered and optional mains electric
- Zero length increase with electric option
- Operator control of outrigger extension
- Intelligent voice warning system
- Radio remote control as standard
- Working area limitation
- Slew limitation (optional)
- Intelligent throttle activation for economy and ecology



Safe load indicator

Max Boom Length 14.61m

Max Lifting Height 14.9m

Capacity 2.9t x 2.5m

Weight 3850 - 4000kg  
(Depending on fuel option)



The URW-376 UNIC mini crane features a six-section hydraulic boom to allow a maximum working radius of 14.45m. This mid-capacity spider crane can be controlled either from the onboard operators seat or from a distance using a radio remote control, or optional radio remote control with digital feedback.

## CRANE SPECIFICATIONS

Crane capacity	capacity:	2.9t x 2.5m
Max working radius	max:	14.45m
Max lifting height	approx:	14.9m
Rope length	max:	18.29m (4 fall), 37.89m (2 fall), 77.07m (1 fall)
Dimensions	folded:	4340mm (l) x 1300mm (w) x 1800mm (h)
Weight	unladen:	3850kg (4000kg with electric option)
Point loadings	Due to the many variables involved, point loadings are only available on request	
Hook speed	approx:	17m/min (with 4 layers and 4 falls)
Telescopic system	boom length:	3.63 - 14.61m
	telescoping speed:	10.98m/23 seconds
	boom type:	6 section hydraulically telescoping boom, hexagonal box construction
Derricking angle/speed	approx:	0 - 80°/10 seconds
Slewing angle/speed	approx:	360° (continuous) 2.5min <sup>-1</sup> (rpm)
Traction system	drive:	hydrostatic 2-speed, stepless forward and reverse
	travel speed:	0-3km/h
	gradability:	23°
	track ground length:	1750mm
	track ground pressure:	36kPa (0.37kg/cm <sup>2</sup> )
Engine	track width:	300mm
	manufacturer:	Mitsubishi
	fuel:	diesel (electric dual power option)
	maximum output:	18kW (24.5PS) / 2100min <sup>-1</sup> (rpm)
	starting method:	electric
Electric motor	tank capacity:	40 litres
	power:	7.5kW
Standard equipment	voltage:	400v AC 50/60Hz
	computer controlled moment limiter (safe load indicator), radio remote control, overwinding alarm, computer controlled intelligent voice warning system, multi-function operation by radio remote control, intelligent throttle activation, automatic hook stow, overload warning device, overload warning lamps, working area limitation	
Optional equipment	1 fall hook block, 2 fall hook block, mains electric dual power (400v), low marking tracks, slew limitation, searcher hook small 480kg, searcher hook 700kg, fly jib 700kg with single part line, radio remote control with feedback display, data logging	

## REMOTES



Standard radio remote control

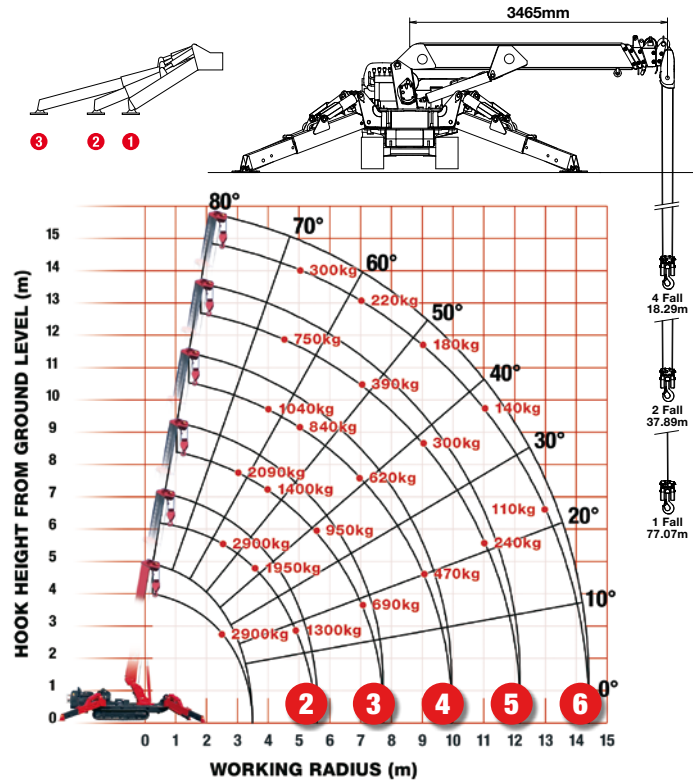
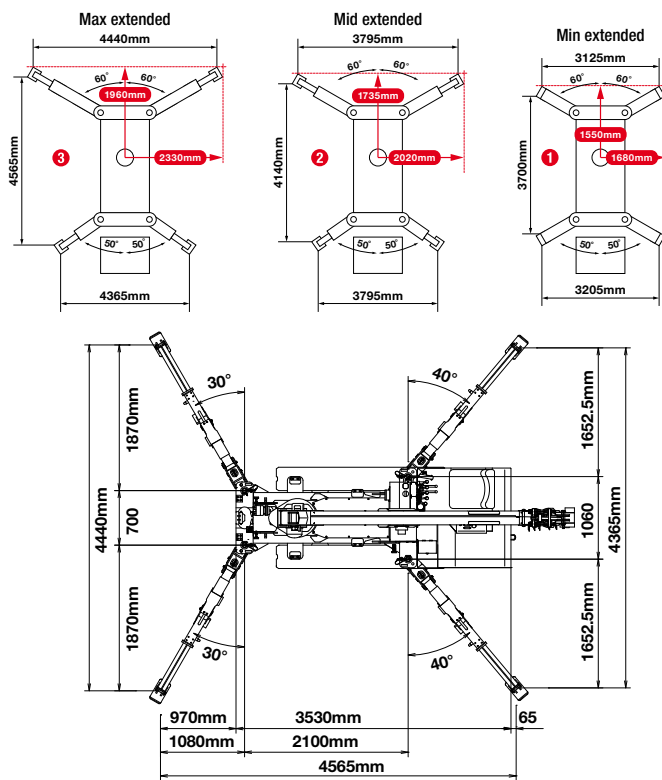


Optional radio remote control with digital feedback

# MINI SPIDER CRANE

**UNIC**  
CRANES EUROPE

## RATED LOADS & OUTRIGGER POSITIONS



### SECOND STAGE EXTENDED 3.63 - 5.85 BOOM LENGTH

Working radius	m	up to 2.0	2.5	3.0	3.5	4.0	4.5	5.0	5.69
Outrigger									
Max-extended	kg	2,900	2,900	2,350	1,950	1,670	1,450	1,300	1,070
Mid-extended	kg	2,900	2,900	2,320	1,920	1,570	1,250	990	770
Min-extended	kg	2,900	2,900	2,170	1,500	1,120	900	720	470

### THIRD STAGE EXTENDED 5.85 - 8.04M BOOM LENGTH

Working radius	m	up to 2.7	3.0	3.5	4.0	4.5	5.0	5.5	6.0	7.0	7.88
Outrigger											
Max-extended	kg	2,240	2,090	1,650	1,400	1,220	1,070	950	840	690	590
Mid-extended	kg	2,240	2,060	1,650	1,390	1,170	1,000	820	640	450	370
Min-extended	kg	2,240	2,060	1,570	1,220	1,020	830	650	510	300	190

### FOURTH STAGE EXTENDED 8.04 - 10.23M BOOM LENGTH

Working radius	m	up to 4.0	4.5	5.0	6.0	7.0	8.0	9.0	10.07
Outrigger									
Max-extended	kg	1,040	930	840	730	620	520	470	380
Mid-extended	kg	1,030	920	830	670	500	380	280	200
Min-extended	kg	1,030	820	640	470	310	220	130	90

### FIFTH STAGE EXTENDED 10.23 - 12.42M BOOM LENGTH

Working radius	m	up to 4.5	5.0	6.0	7.0	8.0	9.0	10.0	11.0	12.26
Outrigger										
Max-extended	kg	750	620	480	390	340	300	270	240	230
Mid-extended	kg	750	620	470	390	320	270	220	170	130
Min-extended	kg	750	620	400	250	180	130	90	60	10

### SIXTH STAGE EXTENDED 12.42 - 14.61M BOOM LENGTH

Working radius	m	up to 4.9	5.5	6.0	7.0	8.0	9.0	10.0	11.0	12.0	13.0	14.45
Outrigger												
Max-extended	kg	300	270	250	220	200	180	160	140	130	110	100
Mid-extended	kg	300	270	250	220	200	180	160	120	90	60	40
Min-extended	kg	300	270	250	220	170	110	80	50	30	20	10

### SEARCHER HOOK SMALL - 480kg



Stowed position



In operation

**Lifting capacity** 480kg sections 1-5

280kg section 6

**Length** 800mm

**Weight** 20kg

**Tilt angles** 0°, 20°, 40°, 60°

## SEARCHER HOOK

## FLY JIB

## DIMENSIONS

